



# ARHGEF19 Polyclonal Antibody

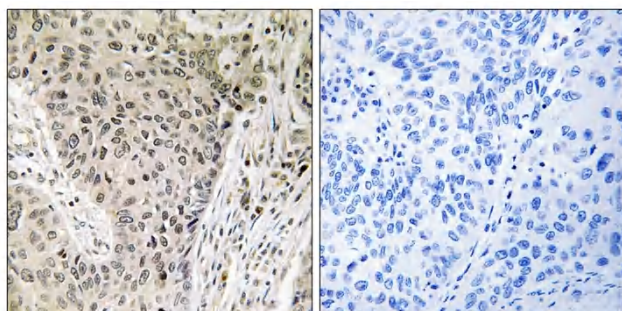
<b>Catalog No</b>	YP-Ab-16140
<b>Isotype</b>	IgG
<b>Reactivity</b>	Human;Rat;Mouse;
<b>Applications</b>	WB;IHC;IF;ELISA
<b>Gene Name</b>	ARHGEF19
<b>Protein Name</b>	Rho guanine nucleotide exchange factor 19
<b>Immunogen</b>	The antiserum was produced against synthesized peptide derived from human ARHGEF19. AA range:251-300
<b>Specificity</b>	ARHGEF19 Polyclonal Antibody detects endogenous levels of ARHGEF19 protein.
<b>Formulation</b>	Liquid in PBS containing 50% glycerol, 0.5% BSA and 0.02% sodium azide.
<b>Source</b>	Polyclonal, Rabbit,IgG
<b>Purification</b>	The antibody was affinity-purified from rabbit antiserum by affinity-chromatography using epitope-specific immunogen.
<b>Dilution</b>	WB: 1/500 - 1/2000. IHC: 1/100 - 1/300. ELISA: 1/20000.. IF 1:50-200
<b>Concentration</b>	1 mg/ml
<b>Purity</b>	≥90%
<b>Storage Stability</b>	-20°C/1 year
<b>Synonyms</b>	ARHGEF19; Rho guanine nucleotide exchange factor 19; Ephexin-2
<b>Observed Band</b>	90kD
<b>Cell Pathway</b>	
<b>Tissue Specificity</b>	Colon,Pancreas,Tongue,
<b>Function</b>	function:Acts as guanine nucleotide exchange factor (GEF) for RhoA GTPase.,similarity:Contains 1 DH (DBL-homology) domain.,similarity:Contains 1 PH domain.,similarity:Contains 1 SH3 domain.,
<b>Background</b>	Guanine nucleotide exchange factors (GEFs) such as ARHGEF19 accelerate the GTPase activity of Rho GTPases (see RHOA, MIM 165390).[supplied by OMIM, Dec 2008],
<b>matters needing attention</b>	Avoid repeated freezing and thawing!
<b>Usage suggestions</b>	This product can be used in immunological reaction related experiments. For more information, please consult technical personnel.



## Products Images



Western Blot analysis of various cells using ARHGEF19 Polyclonal Antibody



Immunohistochemistry analysis of paraffin-embedded human lung carcinoma, using ARHGEF19 Antibody. The picture on the right is blocked with the synthesized peptide.